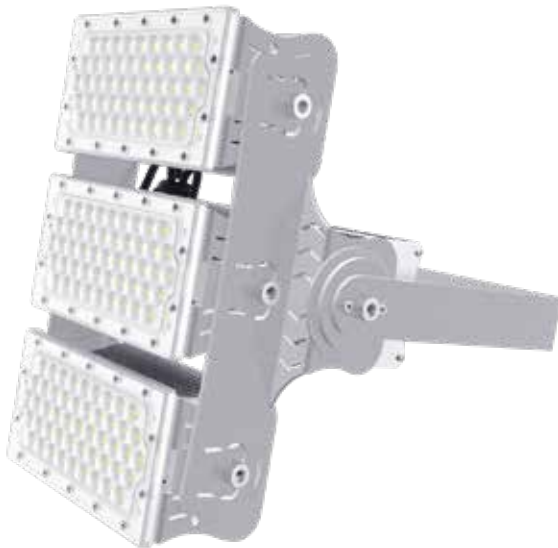
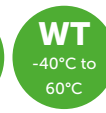


# LED IP65 Adjustable Floodlight (100W Module)



The CEMA Lighting LED IP65 Adjustable Floodlight provides a bright clear energy-efficient light suitable for internal and external lighting of industrial, manufacturing, workshops and forecourts, as well as many other applications.

This unique fitting has adjustable LED modules which can rotate through 200° to provide multiple directions of light for specific task areas, or just slight angle changes to increase the overall spread of light to reach a required area. It has replaceable lenses to allow for quick and easy changes to the beam angle of the luminaire using either 60°, 90° or 120° lenses.

The modules can be replaced individually and maintenance is a fast and easy process. The fittings are extremely light in comparison to similar types of LED luminaires, weighing as little as 2.9kg and with its 160LM/W output it also offers one of the highest available efficiencies for LED luminaires on the market.

With up to 80,000 hours lifespan this provides a maintenance free solution for difficult applications where changing lamps or drivers can either be hazardous or expensive. This product comes with the CEMA Lighting five year 'Fit & Forget' warranty.

## Key Features & Benefits

- Provides ideal lighting for industrial, manufacturing, commercial and outdoor applications
- Adjustable angle 100W LED modules for maximising light spread
- 60° / 90° / 120° beam angles
- Up to 160Lm/W efficiency
- IP65 rated
- 5 years 'Fit & Forget' warranty
- Reduces energy consumption by over 50% on traditional lighting

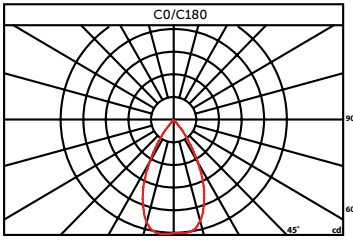
## Applications

- Exterior of Buildings
- Industrial Plants
- Amenity Areas
- Warehouses
- Sports Hall
- Preparation Areas
- Swimming Pool Areas
- Car Parks

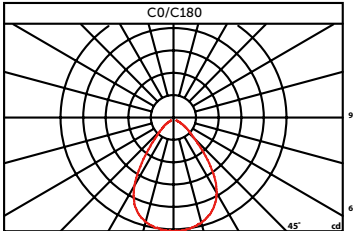


# Photometrics

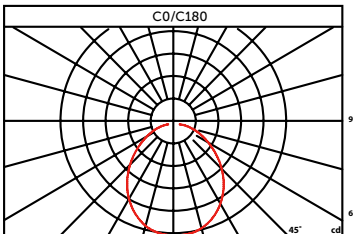
60°



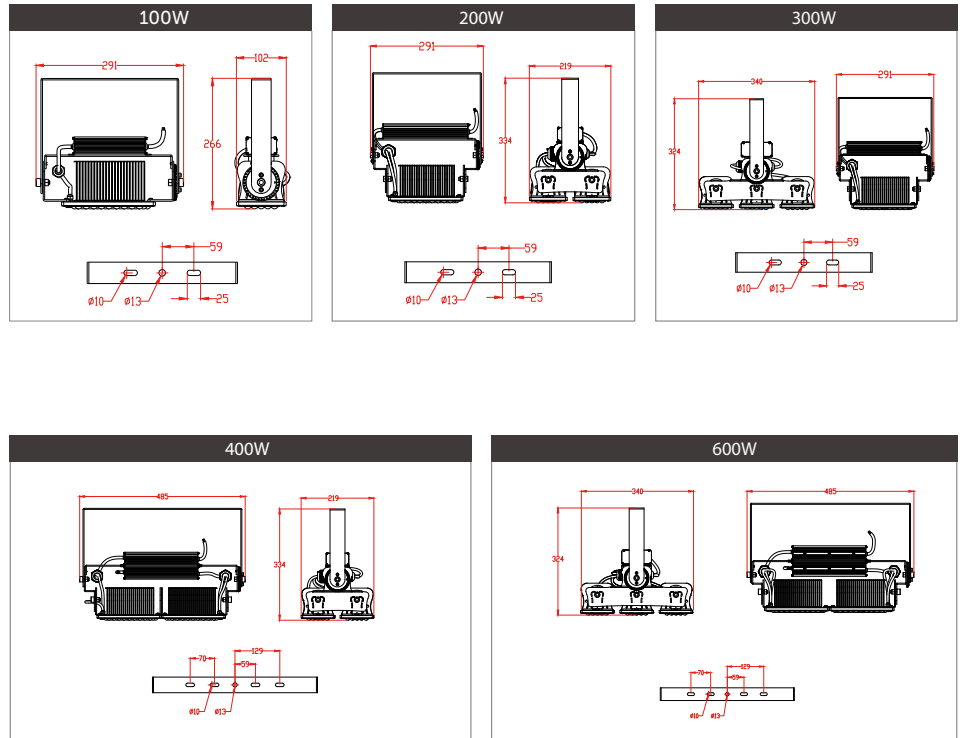
90°



120°



# Size Diagrams



# Technical Specification

Product Code	102-01-080	102-01-100	102-01-120	102-01-150	102-01-200
Wattage	100	200	300	400	600
IP Rating	IP65	IP65	IP65	IP65	IP65
Luminous Output	16,000	32,000	48,000	64,000	96,000
Lumens Per Watt	160±5%	160±5%	160±5%	160±5%	160±5%
Lifespan L70 at 25°C	80,000	80,000	80,000	80,000	80,000
Colour Temp	2700K - 6500K	2700K - 6500K	2700K - 6500K	2700K - 6500K	2700K - 6500K
CRI	>70%	>70%	>70%	>70%	>70%
Input Voltage	90-305V	90-305V	90-305V	90-305V	90-305V
Working Temp	- 40°C to 60°C	- 40°C to 60°C	- 40°C to 60°C	- 40°C to 60°C	- 40°C to 60°C
Beam Angle	60° / 90° / 120°	60° / 90° / 120°	60° / 90° / 120°	60° / 90° / 120°	60° / 90° / 120°
Power Factor	>0.95	>0.95	>0.95	>0.95	>0.95
Weight	2.9KG±5%	4.2KG±5%	5.6KG±5%	7.4KG±5%	10.3KG±5%
Dimensions (mm)	291 x 102 x 266	291 x 219 x 334	291 x 340 x 324	485 x 219 x 334	485 x 340 x 324



CEMA Lighting Ltd  
Gallamore Lane  
Market Rasen  
Lincolnshire  
LN8 3HA

01673 840000  
cemalighting.co.uk

Connect with us

