

Key Features & Benefits



- 180° & 200° detection angle
- 1.8M to 2.5M recommended installation height
- IP44 & IP55 rated
- Adjustable lux and time delay settings
- Available in black or white
- Fit & Forget 5 Year Warranty



STOCK

Adjustable PIR Motion Sensors

Technical Specification

Product Code	903-60-01
Max Lamp Wattage	225W LED
IP Rating	IP55
Weight	0.2KG
Lux Setting	2 - 2000Lux
Time Setting	3 - 30 Mins
Detection Range	12M @ 2.5M
Detection Angle	200°
Input Voltage	230V 50Hz

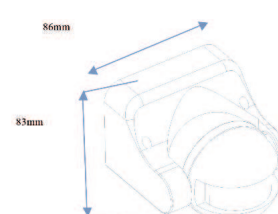
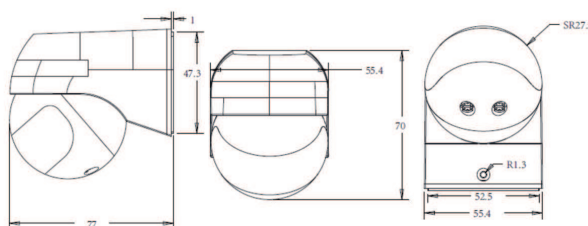
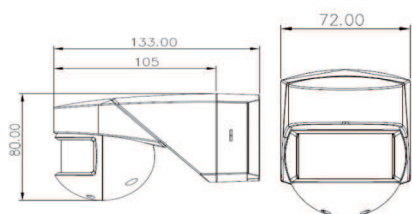
PIR sensor type 1

Product Code	903-60-02
Max Lamp Wattage	300W LED
IP Rating	IP44
Weight	0.125KG
Lux Setting	3 - 2000Lux
Time Setting	10 Sec - 15 Mins
Detection Range	12M @ 2.5M
Detection Angle	180°
Input Voltage	230V 50Hz

PIR sensor type 2

Product Code	903-60-03
Max Lamp Wattage	1000W LED
IP Rating	IP44
Weight	0.09KG
Lux Setting	3 - 2000Lux
Time Setting	10 Sec - 15 Mins
Detection Range	12M @ 2.5M
Detection Angle	180°
Input Voltage	230V 50Hz

PIR sensor type 3



Commercial and Industrial Lighting Specialists



RoHS CE Compliant

Cema Lighting Ltd, Gallamore Lane Industrial Estate, Market Rasen, Lincolnshire, LN8 3HA

Tel: 01673 840000 Fax: 0845 505 0775 Email: sales@cemalighting.co.uk Website: www.cemalighting.co.uk